



capital
hospital
G R O U P

LEARN MORE ▶





Welcome

Welcome to the Capital Hospital Group Digital Brochure. Please **CLICK** on the tabs on the right to Navigate through to the relevant sections of the document. You may also Navigate the Document by Clicking the Tabs at the Foot of the Document. Click the ◀ ▶ Arrows to go to the Next or Previous Page.



Contents

About Capital Hospital Group

Durban Haematology Hospital

Capital Surgical

Ambulatory Surgical Centres

Our Competitive Advantage

Our Team

Value Proposition

Contact Details

The Capital Hospital Group

The Capital Hospital Group owns and operates specialized healthcare facilities in Kwazulu-Natal, South Africa. The Group was established by a Board, who collectively have had many years of involvement with healthcare organizations at various points of the healthcare service delivery chain. The philosophy of the organization is that the most clinically appropriate treatment can only be administered in focused healthcare centres that harness good infrastructure and operational design principles with the right clinical skill resources.

We believe the “*Centre of Excellence*” model together with our dedicated Ambulatory Surgical Centres (ASC) will realize improved cost efficiency that benefit us as healthcare providers and our Funders alike. This is in addition to the overarching purpose of providing better patient experiences and clinical outcomes. We aspire to constant innovation seeking synergy from partners in the realisation of the national goal of “*affordable and accessible*” healthcare for all.



The Capital Hospital Group

The Capital Hospital Group Holding Structure comprises the Durban Haematology Hospital; Capital Surgical Westridge; Capital Surgical Umhlanga and Capital Surgical Chatsworth



Durban Haematology Hospital



Capital Surgical Centre's

Durban Haematology Hospital

The Durban Haematology Hospital is the flagship healthcare facility developed by The Capital Hospital Group. It is a specialist facility that is purpose built and custom designed to offer the most suitable clinical environment for the treatment of blood disorders.

This facility will routinely treat deeply neutropaenic patients and has incorporated International best-practice design elements to maintain the highest Infection Control standards. We offer 26 isolation suites with high particulate filtration and positive pressure differentials in a mixed configuration of ICU, Adult and Paediatric High-care.

This high level of care is supported by 8 oncology sub-acute beds. The Hospital has a Bone Marrow/Stem Cell Transplant Unit and a Cryopreservation Laboratory employing advanced technology in the field. It is the first in KZN and one of only four such Units nationally. The Hospital is currently at an advanced stage of development and is expected to commence operations on 1 July 2013.



Durban Haematology Hospital

The Durban Haematology Hospital combines leading edge technology with first class facilities which include:

- A Bone Marrow Transplant Unit
- Apheresis (Harvesting and treatment)
- A Cryopreservation Laboratory
- 18 Adult High-care Isolation suites
- 2 ICU Isolation suites
- 6 Paediatric High-care Isolation suites
- 8 Oncology Sub-acute beds
- A further 28 Oncology Sub-acute beds will be available in March 2014

The Group has undertaken extensive research on international best practice for the design of isolation facilities. The critical equipment and design factors for such units incorporate attention to detail as follows:

- Fully equipped "*Medical Equipment Rooms*" housing Ventilators and dialysis machines etc. to convert any suite into an ICU to ensure comprehensive treatment modalities are available in order that the patients' immunological status is not compromised



Durban Haematology Hospital

- Mobile x-ray and ultrasound units are available within the Isolation Floors to fully service the patient without exposing the patient to infection by transporting the patient out of isolation
- High degree of mechanical engineering specification in the design of heating, ventilation and air-conditioning (HVAC) particularly in relation to filtration systems and pressure differentials . Automatic sliding doors at the point of ingress to each Isolation Suite maintain the critical "*positive pressures*" within each suite for maximum effect
- Sensors are located at the door of each Isolation Suite to determine the "*Pressure Gradients*" with alarm indicators for visual attention of the nursing staff
- The common areas in juxtaposition to the Isolation Suites are "*High Filtration*" zones which allow for the early mobilization of our patients



Durban Haematology Hospital

During a long-term hospitalisation episode, which on average for Bone Marrow Transplant patients ranges between 4 – 6 weeks, the emotional well-being is equally important to the recovery of a patient.

These patients require emotional support of family and friends however, the nature of their condition is such that minimal physical contact and interaction is paramount to assisting recovery. We have endeavored to address this with the provision of advanced technology communication systems with the supporting data transmission infrastructure in the form of fibre-optic connectivity and "Skype-enabled" smart television sets.

Patients can therefore video-conference at their leisure at no charge with the intention of promoting the psychological wellness of patients.

From the above, it is evident that there has been extensive consultation with clinicians to design and develop Isolation Suites which promote Infection Prevention and control of the highest standards. This investment in infrastructure to deliver an appropriate clinical environment has been significant. To see the layout Click on the buttons below.

Level 4



VIEW SITE PLAN

Level 6



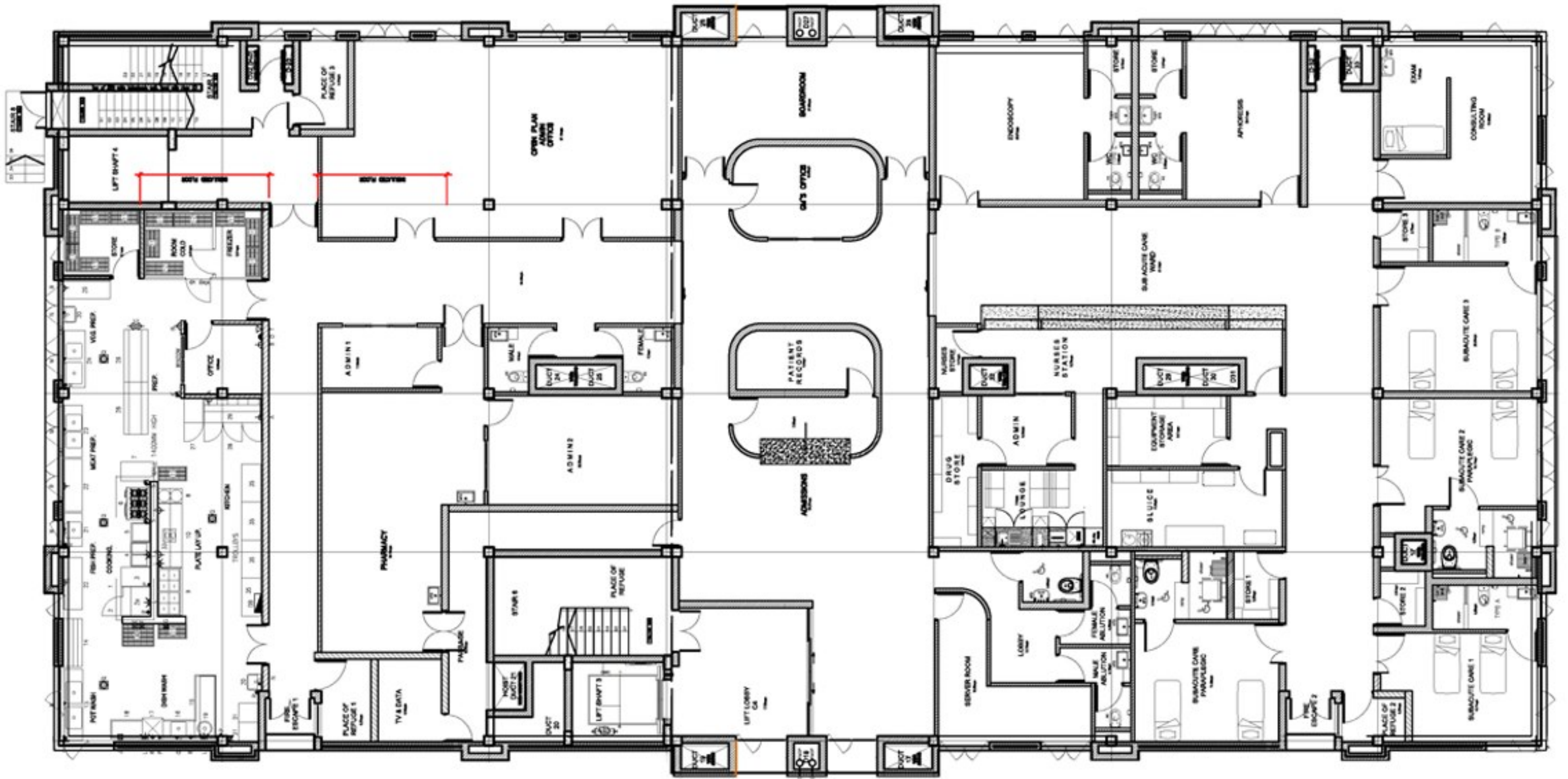
VIEW SITE PLAN

Level 7

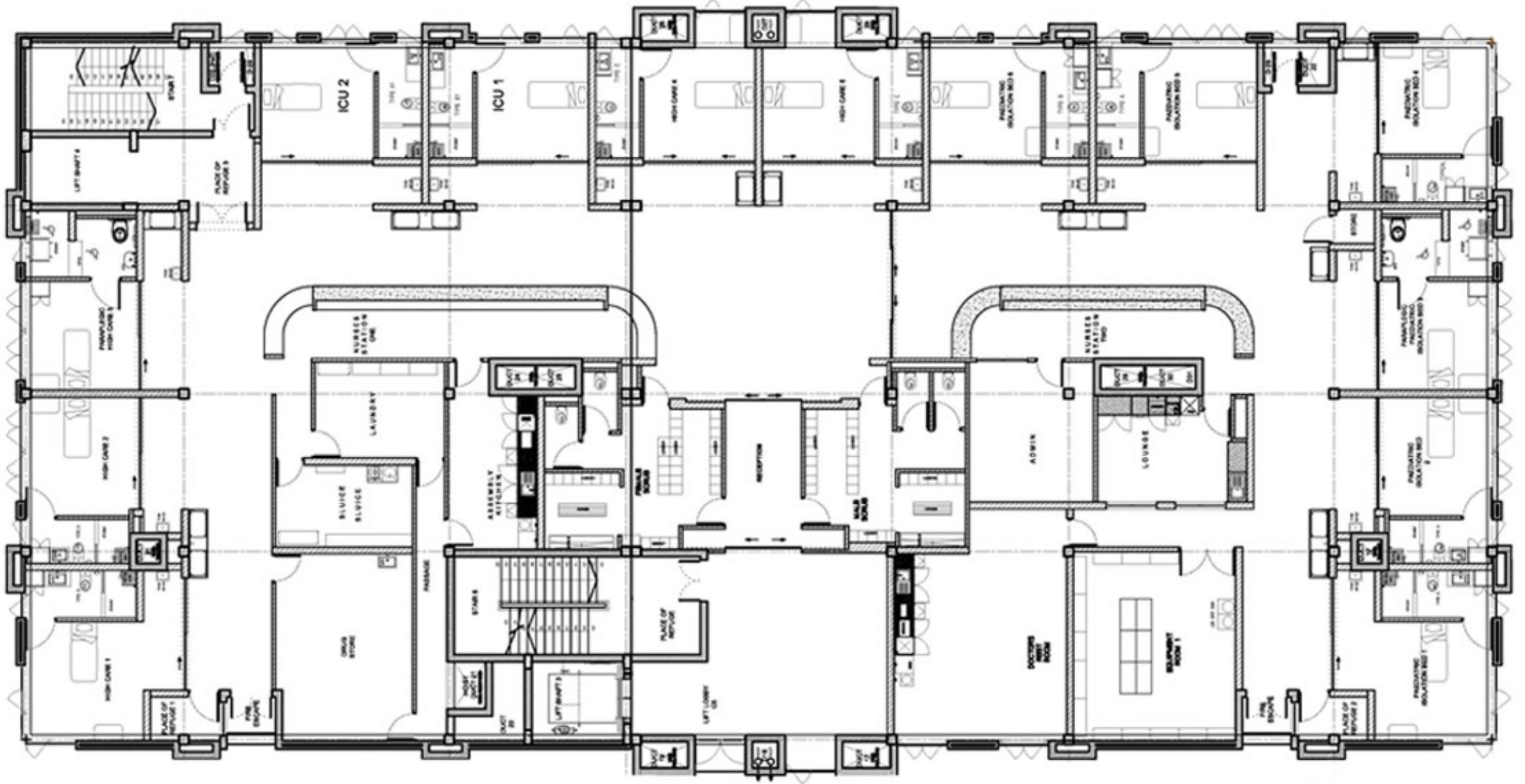


VIEW SITE PLAN

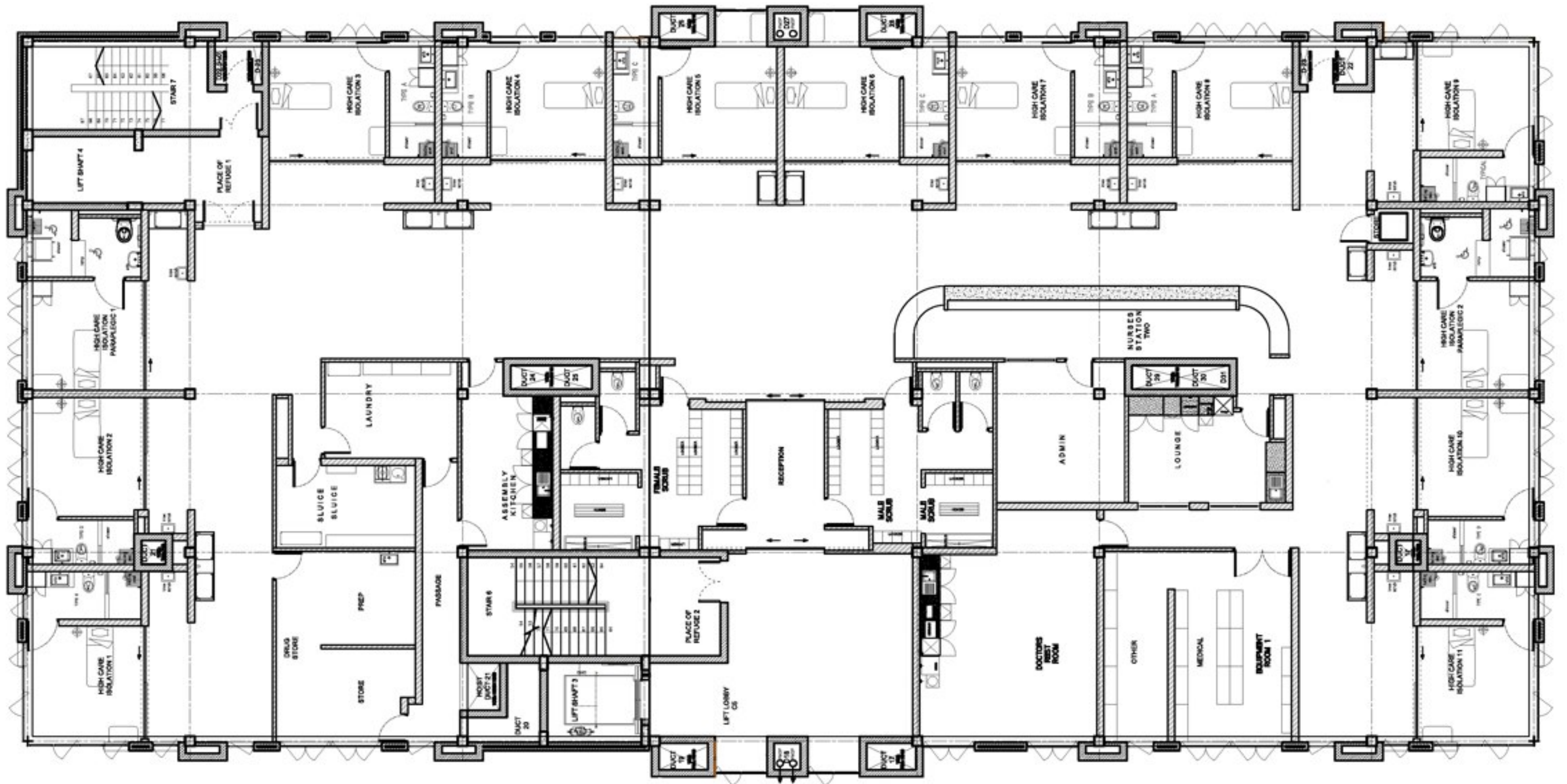




[← BACK TO PAGE](#)



[← BACK TO PAGE](#)



[BACK TO PAGE](#)

Capital Surgical

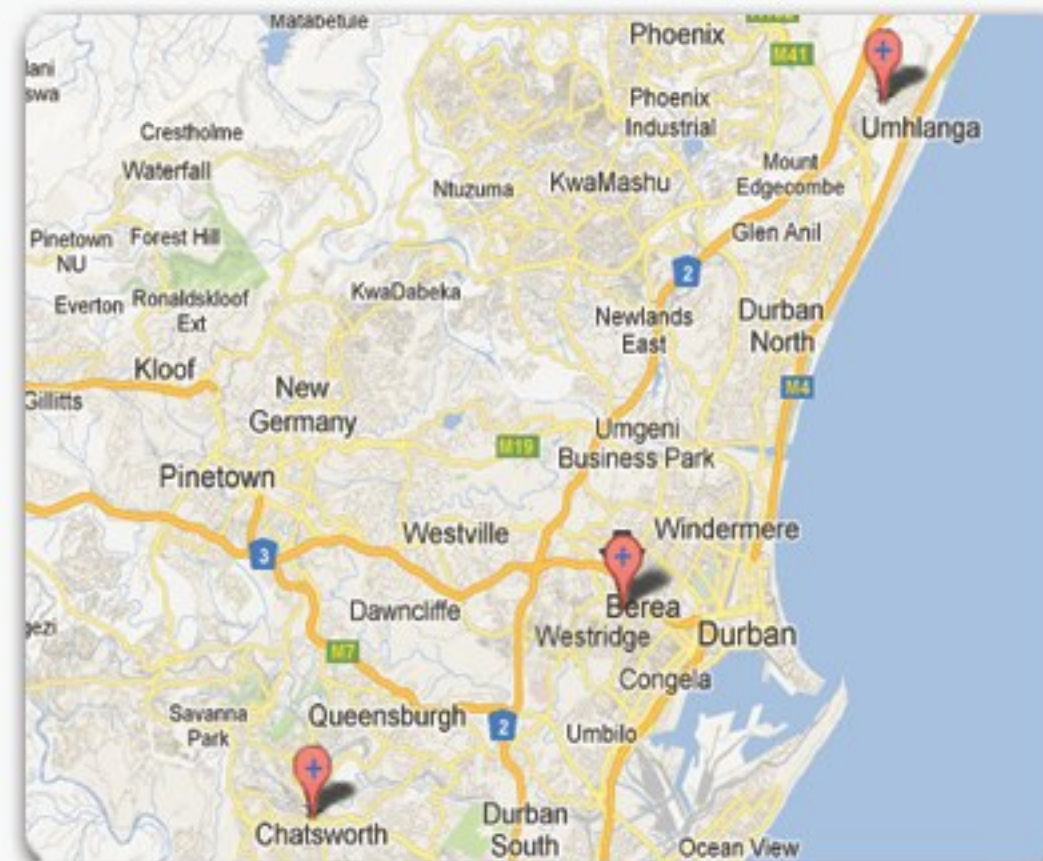
The Group has an Ambulatory Surgical Centre (ASC) network registered as Capital Surgical and consists of three facilities in the Greater Durban area. Capital Surgical Westridge is co-located with Durban Haematology Hospital.

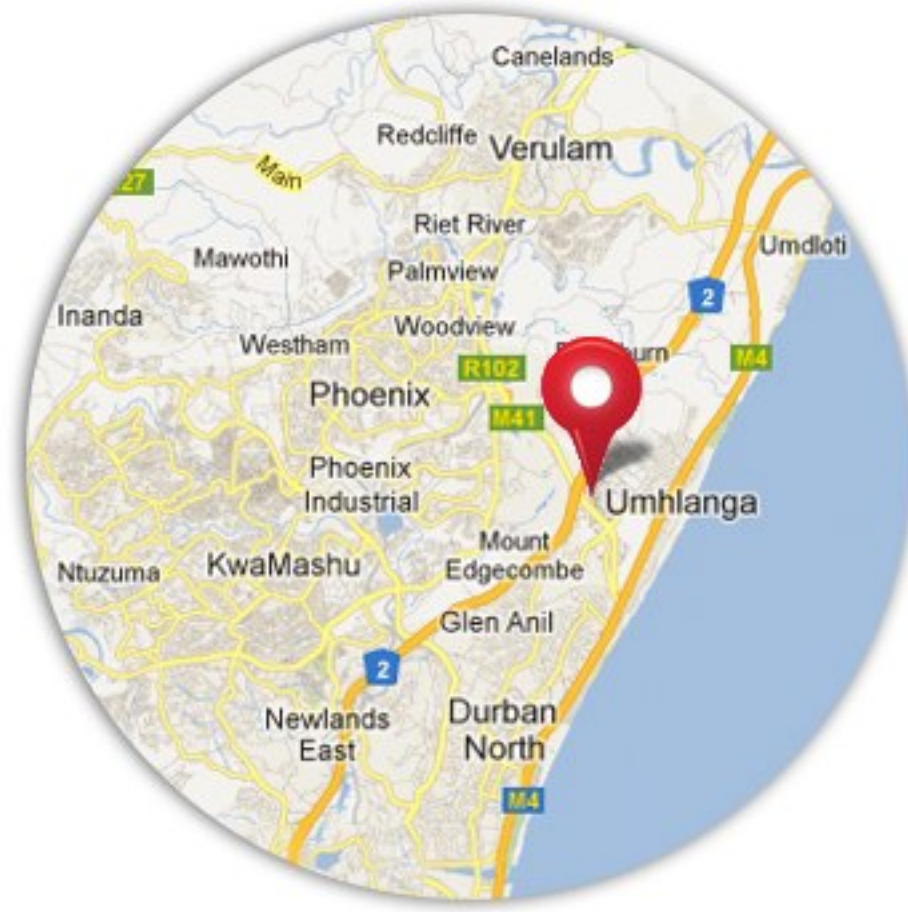
The Group has approval by the Department of Health to develop two additional Ambulatory Surgical Centres (ASC's). These facilities will be situated to the North and South of Durban.

Geographically, the location of the two proposed ASC's ensures that Capital Surgical will have a large footprint across Kwa-Zulu Natal.

Capital Surgical Westridge is centrally located with the other two centres being Capital Surgical Umhlanga and Capital Surgical Chatsworth. The latter two are stand-alone unattached Ambulatory Surgical Centres (ASC).

[VIEW LOCATIONS](#)





Map Location of Capital Surgical Centre's



Ambulatory Surgical Centres (ASC)

The ASC configuration is as follows:

Capital Surgical Westridge (CSW)

3 Theatres, 25 beds (Phase 1)

- A further 9 recliners can be available immediately and 16 beds in Phase 2 due for completion in March 2014

[VIEW SITE PLAN](#)

Capital Surgical Umhlanga (CSU)

3 Theatres, 34 beds

- Due for completion in November 2014

[VIEW SITE PLAN](#)

Capital Surgical Chatsworth (CSC)

4 Theatres, 42 beds

- Due for completion in June 2014

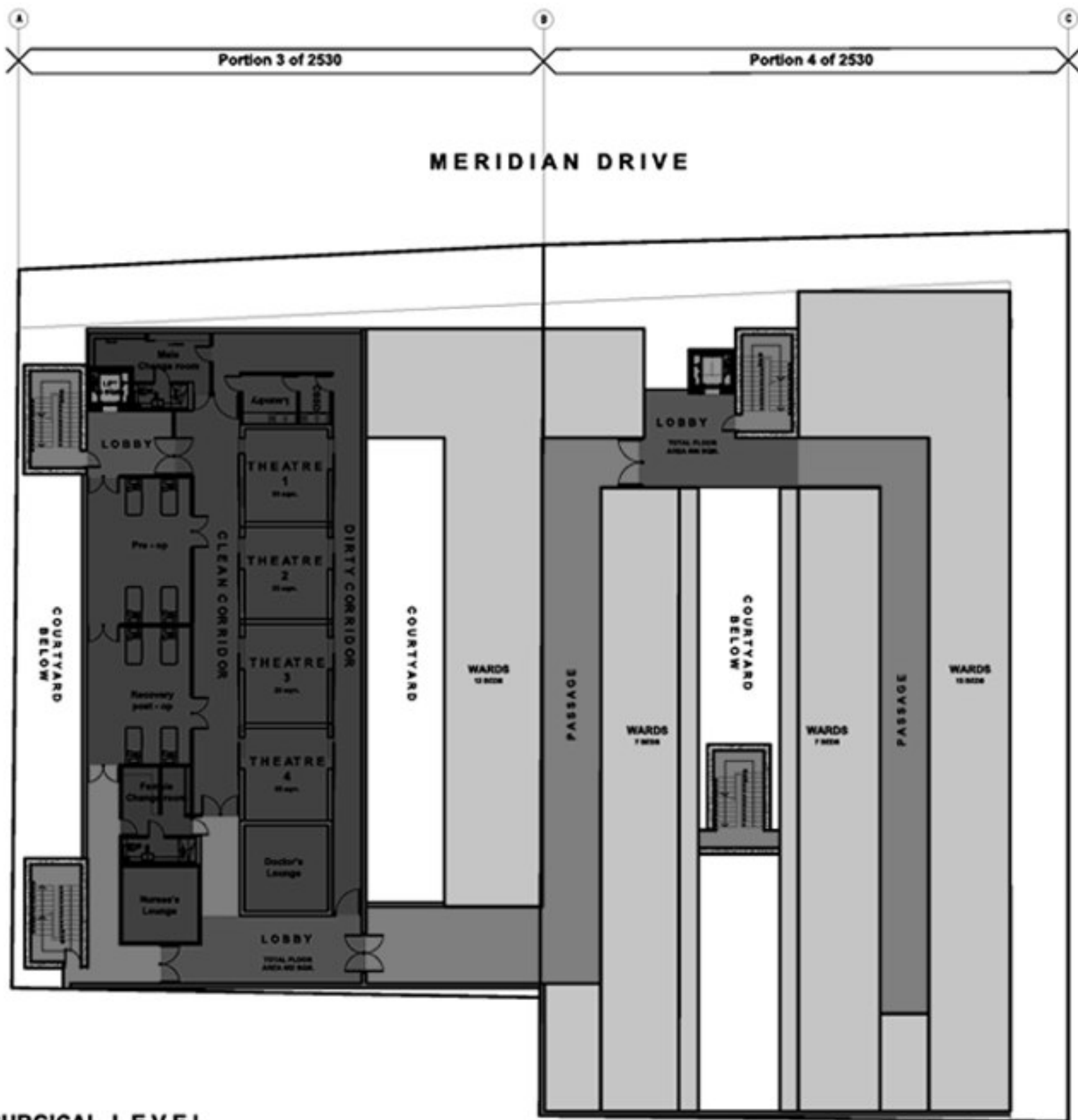
[VIEW SITE PLAN](#)

Operational Hours and Flexibility

The envisaged operational time for the ASC's is 8 hours per day from Monday to Friday. These hours relate specifically to the Operating theatre only. The Recovery and Day Ward facilities will remain open until the last patient is safely discharged. The operating times can be adapted and/or extended to suit Theatre User or Funder preferences.

We are receptive to alternate reimbursement arrangements around the optimum utilization of our theatre capacity. We are able to offer dedicated theatre operating times across any of our ASC's at the convenience of our Funders.

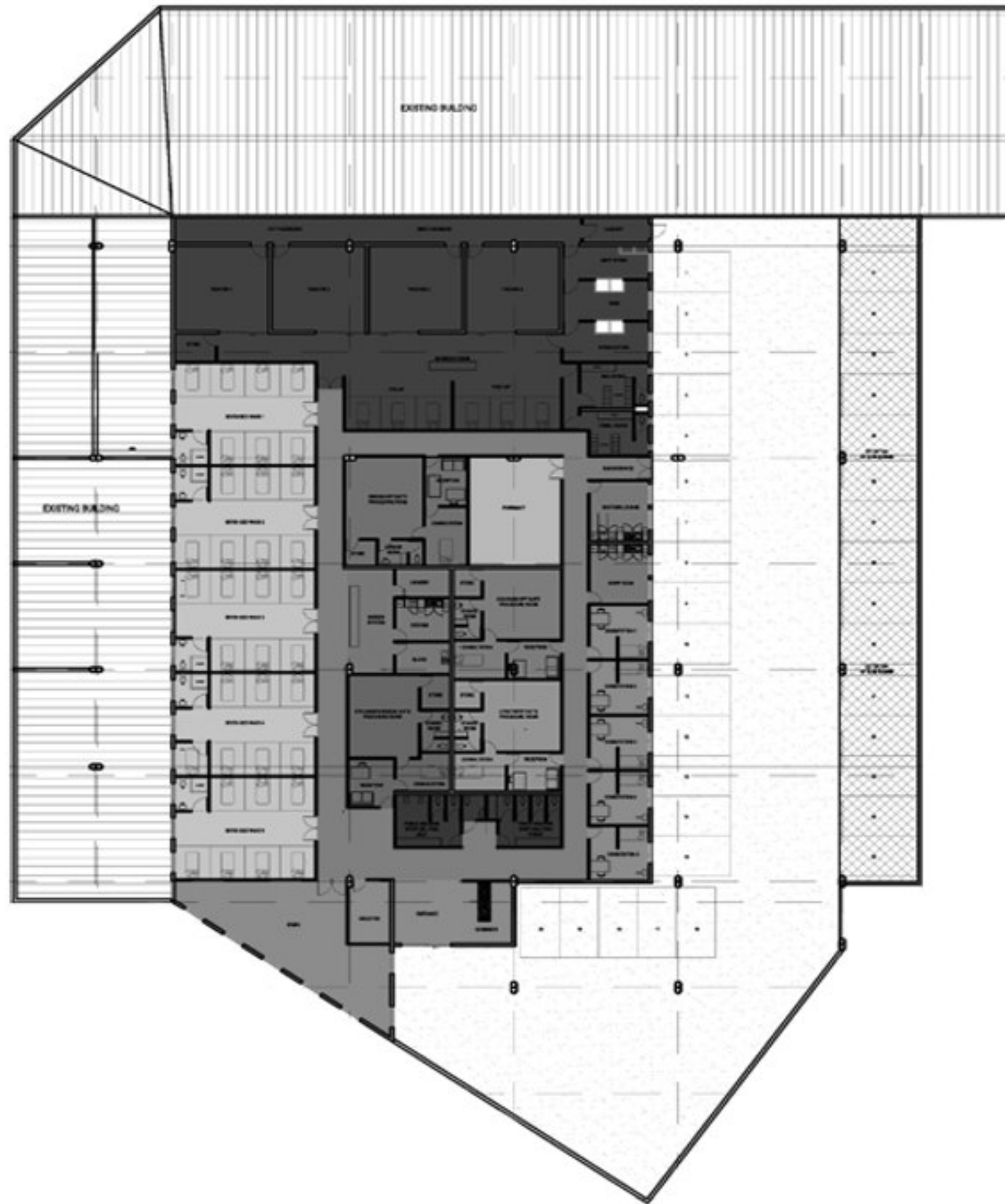




SURGICAL LEVEL



[← BACK TO PAGE](#)



[← BACK TO PAGE](#)

Our Competitive Advantage

Location

Durban Haematology Hospital is strategically located on the same property as several other service providers who compliment a specialized oncology related service offering and incorporate various diagnostic and treatment modalities. The combination of these facilities provides an environment conducive to rapid patient recovery. This is achieved by harnessing the multi-disciplinary team available to consult with the patient and provide a coordinated approach to patient treatment.

They are:

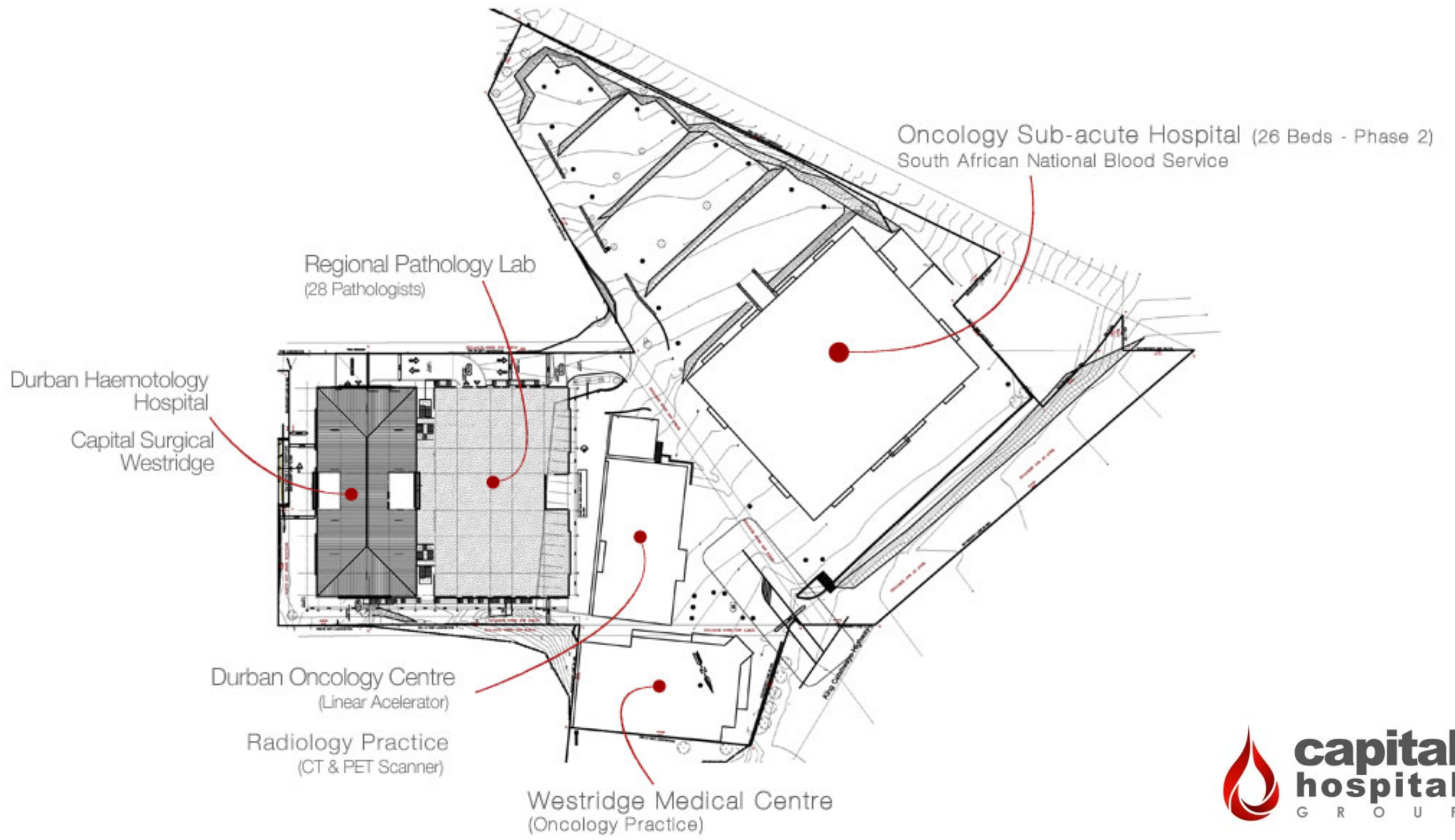
- Durban Oncology Centre, which houses a Linear Accelerator and is a purpose built radiotherapy centre. The above is supported by two large Oncologist group practices

- A Radiology practice, who operate a full diagnostic radiological service including the only positron emission tomography (*PET*) scan available in the private sector in KZN.
- A Pathology Laboratory with their total complement of almost 30 pathologists employed in KZN reside in an adjacent building to the hospital. Their laboratories cater for the four laboratory disciplines.

Commencing early in 2014, the second phase of the development will be complete. The South African National Blood Service (S.A.N.B.S.) have agreed to situate a fully equipped Laboratory on this site. An additional 28 oncology subacute beds will be incorporated in Phase 2.

[VIEW SITE PLAN](#)





Site Plan

[← BACK TO PAGE](#)

Our Competitive Advantage

Synergy

Located within the facility are four full-time haematologists including a paediatric oncologist with different areas of special interest that complement each other.

The Capital Hospital Group is able to explore the synergy between the myriad of healthcare service providers available in the design of an oncology related diagnostic or treatment specific service offering on an alternate reimbursement basis.

Capital Surgical Westridge, Capital Surgical Chatsworth and Capital Surgical Umhlanga as a network of Ambulatory Surgical Centre's (ASC) offer the convenience for both patients and theatre users in terms of scheduling and faster turnaround times between cases.

The further benefits of Capital Surgical Westridge, Chatsworth and Umhlanga include:

- Greater predictability as theatre slates are uninterrupted by emergency cases or major surgery which often complicates and delays scheduled cases.
- Admissions are expedited due to a streamlined admission process and the design of the facility.
- The proximity of the wards and theatres to the Reception area decreases patient movement.
- Shorter theatre case time related to improved organization and coordination



Our Team

Directors

- Mr. Logan Naidoo
- Dr. Anil Bramdev
- Dr. Mick Forder
- Dr. Vish Naidoo
- Dr. Jaimendra Singh
- Dr. Robbie Buck

Executive Committee

Dr. Visegan Subrayen (*General Manager*)

Dr. Subrayen is a dentist by profession, having worked as a clinician in both the public sector and in private practice. He completed a MBA at the University of Cape Town.

Thereafter he entered the corporate environment. He has worked as a healthcare analyst for an international consulting firm investigating markets and analyzing strategy of healthcare organizations.

This led to a career in Hospital Management where he successfully managed hospitals for the two largest JSE-listed Hospital Groups in South Africa. His professional area of interest is Quality Management and lectures on the subject at the University of Kwazulu-Natal, Masters of Public Health programme.



Our Team

Deepchand Algu (Finance and Administration Manager)

Mr. Algu has a B.Com. Degree and a post graduate Diploma in Education. He started his career in 1985 completing his articles of clerkship and subsequently joining a healthcare group – the P.E. Medical Group – as Group Accountant in 1992. Mr. Algu has 20 years of experience in the healthcare industry in the role of Finance and Administration manager, as well as five years of experience as Hospital Manager at one of the big three private hospital groups. He has a certificate in Project Management and attended a six month program on Leadership Development at Wits.

He has also gained varied exposure working at independent hospitals and was Project Consultant at a mine hospital in Botswana prior to joining Capital Hospital Group.

Vivienne Scorer (Nursing Services Manager)

Mrs. Scorer qualified as a Registered Nurse with a Diploma in General, Midwifery, Psychiatric and Community Health nursing in 1990. She further completed a post basic Diploma in Intensive Nursing Science in 2000, after working in a multi disciplinary ICU for 10 years. She also has experience as an ICU Clinical Facilitator wherein she excelled in a teaching and coaching capacity. She was promoted to the ICU Unit Manager of a large acute multi-disciplinary hospital during which time she completed several management programs.



Our Team

Darren Coetsee (Human Resources Manager)

Darren has a Bachelor of Social Sciences degree and Honours in Industrial Relations and has studied towards the Bachelor of Laws (LLB) degree. He worked for Unilever SA for 7 years as a generalist in both the Training and Human Resources departments and by the end of his tenure he was a senior HR Manager responsible for the Simonsberg Cheese, Lipton Tea and Royco Soup factories. He opened a HR and Labour Law consultancy, which he ran for the last 12 years. In 2007/2008, whilst still running his company, he was contracted to the role of HR Director for Virgin Mobile and in 2009/2010 as HR Director of Blake Holdings.

Rozlyn Cruickshank (Senior Pharmacist)

Rozlyn graduated with a Bachelor of Pharmacy degree from the Witwatersrand University. She then went on to complete the New Managers Programme with the same institution. Her professional interest is in the area of antimicrobials and chemotherapy and in order to gain more exposure to this field, she worked as the Senior Oncology Pharmacy Technician at London Bridge Hospital in the UK. Here she implemented improvement strategies and managed the aseptic processes. Choosing to return to SA she was appointed as a Production Pharmacist at a leading pharmaceutical company and thereafter Hospital Pharmacist responsible for the oncology service before joining the Capital Hospital Group. She is passionate about best practices and methods of integrating pharmacists as a fundamental link in the multi-disciplinary approach to patient care.



Value Proposition

The Capital Hospital Group recognizes that partnering with Funders are key to the sustainability of delivery quality clinical care. Innovation in our approach is a key aspect of our business and for this reason, we believe there exists an opportunity to pioneer a new model of an alternate reimbursement structure from that of the fee-for-service convention for both oncology patients and general minor surgical cases.

Our commitment to patient needs remains our highest priority. We invite prospective patients, their families and funders to contact us for more information.



Contact Us

For any further enquiries regarding the Durban Haematology Hospital and Capital Surgical Services, Prices and Procedures, please do not hesitate to visit, e-mail, or call our General Manager, Dr. Visegan Subrayen.



59 Musgrave Road, Durban, Kwa-Zulu Natal,
South Africa, 4000



visegan.subrayen@capitalsurgical.co.za



Dr. Visegan Subrayen | (031) 201 5660